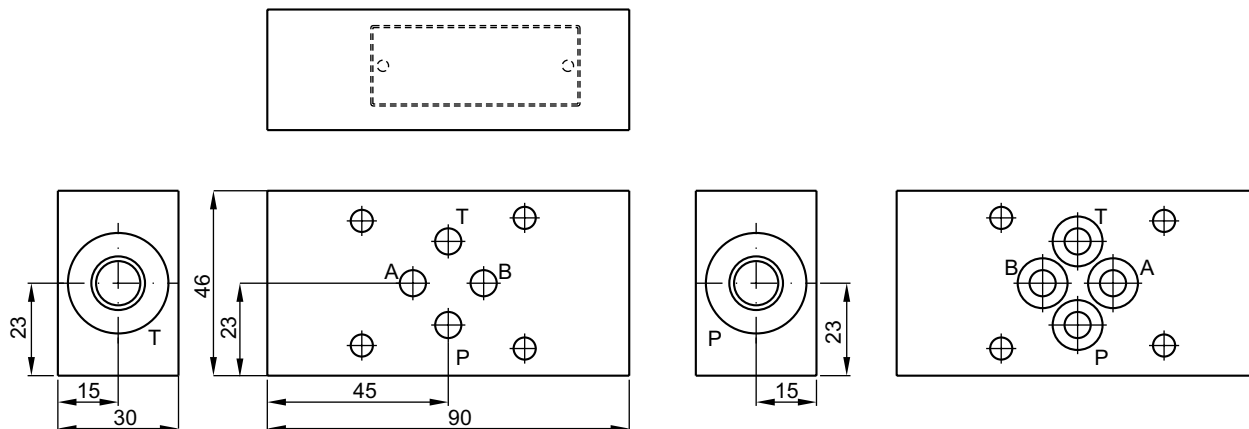
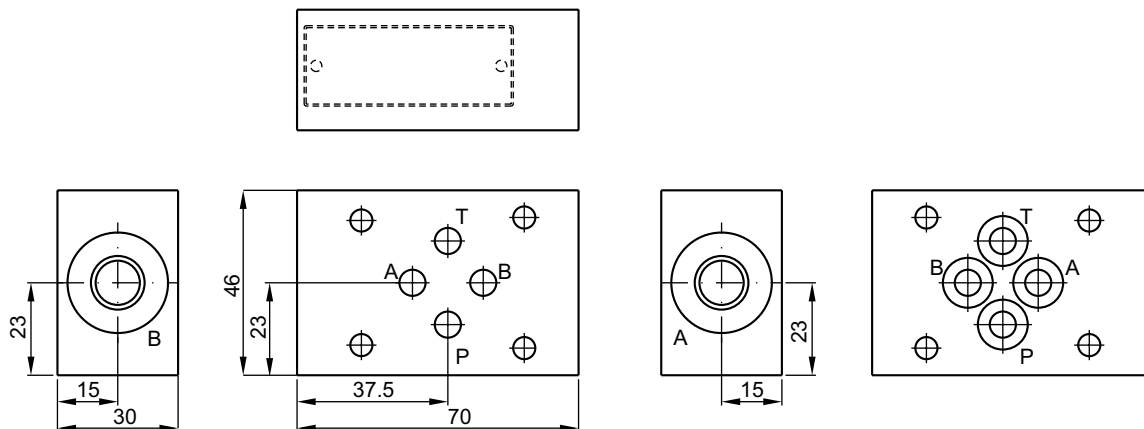


Sandwich plate H06-1044, CETOP 03 / NG06



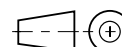
Symbol	Ordering code
	<p>H06-1044 CETOP 03 (O-rings included in delivery)</p>

Sandwich plate H06-1039, CETOP 03 / NG06

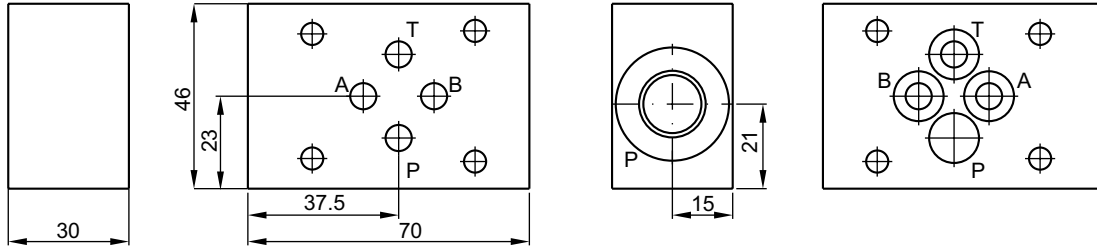


Symbol	Ordering code
	<p>H06-1039 CETOP 03 (O-rings included in delivery)</p>

12

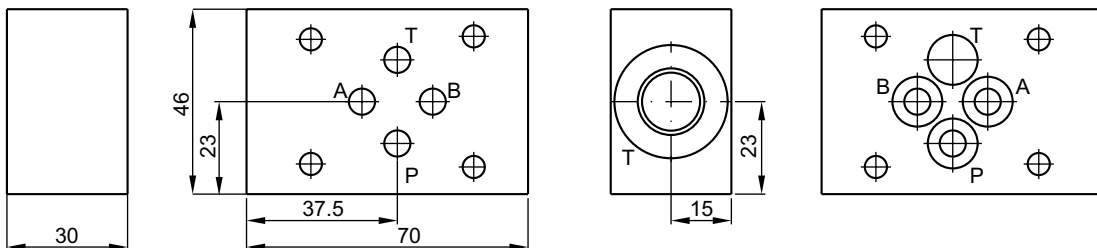
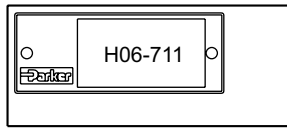


Sandwich plate H06-504, CETOP 03 / NG06

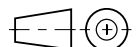


Symbol	Ordering code
	<p>H06-504 CETOP 03 (O-rings included in delivery)</p>

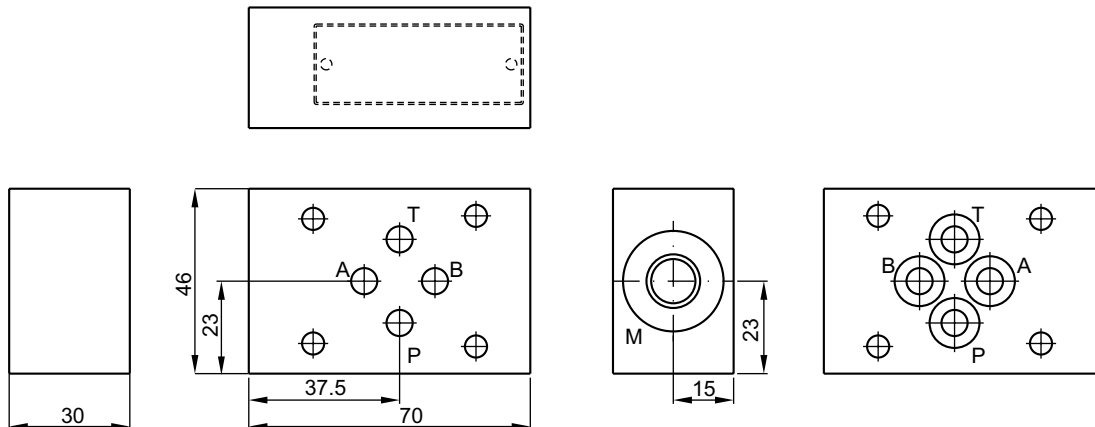
Sandwich plate H06-711, CETOP 03 / NG06



Symbol	Ordering code
	<p>H06-711 CETOP 03 (O-rings included in delivery)</p>



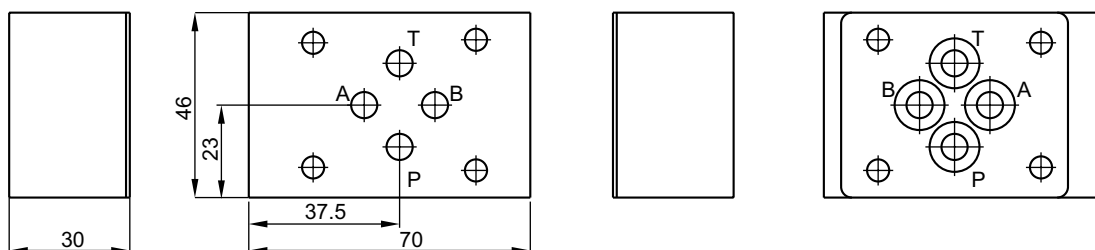
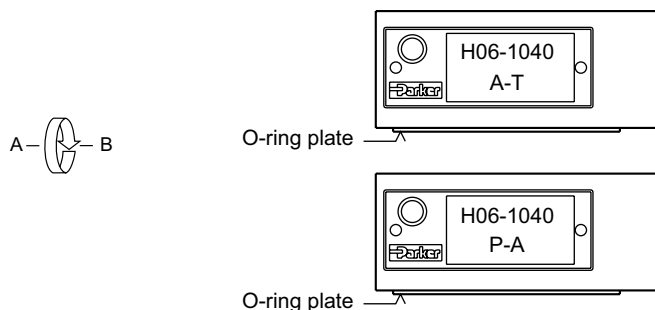
Sandwich plate H06-1274, CETOP 03 / NG06



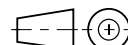
Symbol	Ordering code
	<p>H06-1274 CETOP 03 (O-rings included in delivery)</p>

Sandwich plate H06-1040, CETOP 03 / NG06

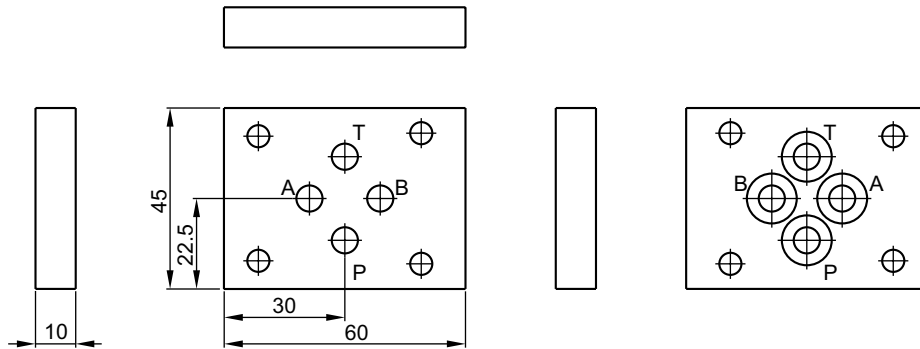
The functional change is achieved by rotating the mounting position of the valve 180°.



Symbol	Ordering code
	<p>H06-1040 CETOP 03 (O-rings and O-ring plate included in delivery)</p>



Sandwich plate H06DO-1291, CETOP 03 / NG06



Symbol	Ordering code
	<p>H06DO-1291 CETOP 03 (O-rings included in delivery)</p>

Sandwich plate H06DU-814, CETOP 03 / NG06

To mount a flow control valve GFG for meter-in (code P) or meter-out (code S) control.

The functional change is achieved by rotating the mounting position of the valve 180°.

For use as secondary control please observe the permitted tank pressure.

Ordering code
<p>H06DU-814 CETOP 03 (O-rings and O-ring plate included in delivery)</p>

